



## Netvue IPTV Multiviewer

The Netvue IPTV Multiviewer provides an ideal solution for monitoring of multiple IPTV channels or streams on a single large display screen.

The configurable multiviewer unit can display up to 16 simultaneous channels of MPEG-2 encoded video, or up to 9 channels of H.264 and MPEG-2 encoded video.

### IPTV Multiviewer Specifications

#### Features:

Multiple IPTV channels from single IP network connection shown on single display.

Highly customisable for layout, branding and visual features.

User control of full-screen channel and audio selection.

#### Inputs:

IPTV streams (Single program MPEG-TS in UDP Multicast packets) on Ethernet RJ-45 connector.

Up to 16 MPEG-2 encoded video streams, or up to 9 H.264 and MPEG-2 encoded video streams.

Audio encoded to MPEG-1, Layer 2 in MPEG-TS at 44.1kHz or 48kHz sample rate.

#### Output:

Up to 1920x1080p resolution on HDMI or DisplayPort connector.

#### Control:

Browser control via IP network connected to Ethernet RJ-45 connector.

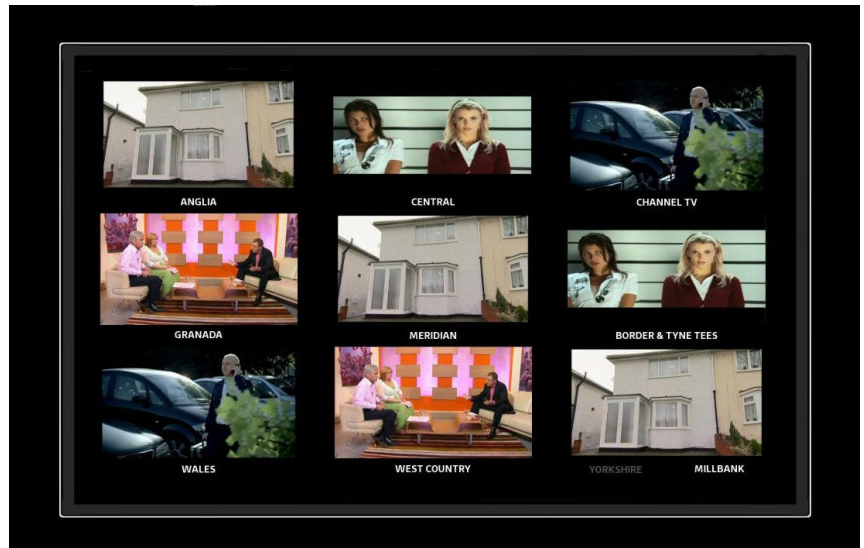
#### Physical:

Hardware appliance with integrated specialist software.

Dimensions: 280W x 270D x 78H

Weight: 4.4Kg

Power: 100 - 240VAC, 5A, 50/60Hz.



The users can remotely change the display to select from multiple 'pages' of different channels, and audio can be selected from any channel. The users can also choose to show any single channel full-screen with audio.



The Netvue IPTV multiviewer is fully configurable, so Netvue can supply customised units that show company branding on the display output, or with a clock, ticker or other on-screen enhancements.

The IPTV Multiviewer offers simple and immediate confidence monitoring of IPTV channels, but the flexibility of configuration means that it can also be used as an attractive display for customer-facing locations, such as reception areas.

Available now and keenly priced – contact us for a quotation.